

# Rā Aroha 2025

WHS Clubs, Groups & Activities  
Use the QR code/link to sign up for clubs you would like to join.

<https://forms.gle/fMczWxxVVDihEia38>



# Amnesty International

**When:** Thursday

**Contact:** Clare Preston (PEC), Social Sciences office, Level 4



Amnesty International is a **global movement of more than 10 million people** who are committed to creating a future where human rights are enjoyed by everyone. United by our **shared humanity**, we know that the power to create positive change is within all of us.

# Basketball

**When:** After School

**Contact:** Jason Reddish (RNJ)  
jason.reddish@whs.school.nz



# Big Band

**When:** Monday

Join big band today!

Big band meets on monday lunchtime to play Jazz. Led by the legendary John Rae, the band attends music festivals and plays at a range of school events. If you are keen to get involved, pop along on a monday lunch to see what it's all about or email Katherine for more information.

**Contact:** Katherine Hodge  
[hek@whs.school.nz](mailto:hek@whs.school.nz)



# Bridge

**When:** Monday

Like playing cards? Come along and learn how to play bridge, one of the most popular card games in the world.

**Contact:** Sharon Henry  
hys@whs.school.nz



# Calm Collective

**When:** Wednesday

Calm Collective run meditation sessions for students and teachers. During each session we exercise and strengthen your brain in a way that helps you to direct focus and hold yourself in the present moment. We do this with simple breath awareness and body awareness. There is no chanting or mantras - just sitting and being aware of the present moment.

With regular practice you can: improve your attention span and ability to focus, be more accepting of yourself, increase your compassion and empathy for others, better manage emotional fluctuations even learn to sleep better.

Calm Collective is a way to connect with others, strengthen your practice, or just come along and give meditation a go. Feel free to bring a friend too. No experience necessary.

**Contact:** Andrew Gordon (GNA)     [gna@whs.school.nz](mailto:gna@whs.school.nz)



# Chamber Music

**When:** TBC

Are you a classical musician who is keen to play in a small ensemble? We would love to hear from you! Please email HEK with some info about what you play and your experience level (e.g. Grade 5 piano).

We are hoping to put together some groups of similar experience to work towards competing in the regional NZCT Chamber Music competition, in June.

So what are you waiting for? Get in touch today!

**Contact:** Katherine Hodge  
hek@whs.school.nz



# Chess

**When: Monday & Thursday**

If you are interested in or want to practice playing chess come along to Chess Club; new participants are welcome any time!

These are mostly casual games but we also do optional inter school competitions (social and competitive teams) and may do challenges, competitions, &/or lessons on occasion.

**Join the google classroom for updates.**

**Code: [oeb3rys](#)**

**Contact: Henry Lockhart**

[lth@whs.school.nz](mailto:lth@whs.school.nz)





# Choir

**When:** Wednesday

Do you like music? Do you like singing in the shower? Do you like spending time with cool people? Well do we have the perfect co curricular activity for you! Choir! Choir is a fun and exciting experience for everyone! Whether you're a trained singer or new to the singing scene, choir is welcoming to all. No previous experience required. We sing a wide range of songs so no matter what genre of music you like there will be a place for you to get into the singing zone! Many exciting potential performance opportunities come from joining choir - such as the national Big Sing event! Or the infamous Wellington High music evenings! So what are you waiting for?

**Contact:** Katherine Hodge  
hek@whs.school.nz



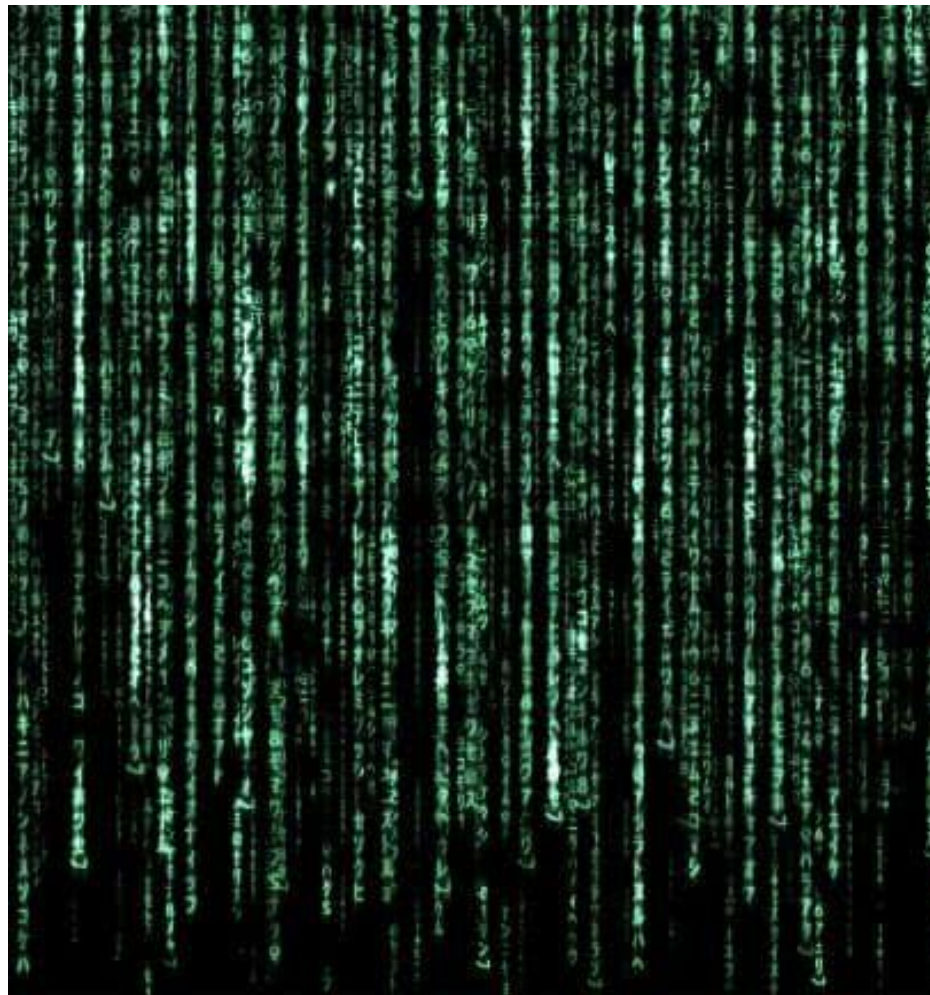
# Code Club

**When:** Tuesday after school 3.30 -5.30

In conjunction with VUW & Tuhura Tech Leon Bowie will help run a code club. We will look at supporting current learning as well as exploring things like Rust and Cybersecurity (through CTF's)

**Contact:** John Barrow (BWJ)  
[bwj@whs.school.nz](mailto:bwj@whs.school.nz)

Google classroom code: 6jmwj72



# Crisis Lab Challenge

**When:** TBC - keep an eye on the notices

The CRISiSLab Challenge is a combined challenge of coding skills, science communication skills, innovation and creativity. The exact challenge has not yet been revealed but last years revolved around getting information from a underwater pressure sensor to detect Tsunami The school has won the top award twice in the last three years. Winners earn a summer internship at Massey university.

**Contact:** Bill Viggers (VSW)

[vsw@whs.school.nz](mailto:vsw@whs.school.nz)

Google Classroom code: ps3ecyw



# KAPA HAKA

Te Whānau a Taraika has been involved with The Wellington Regional competition since 2000, and will perform once again on the big stage.

All students from Wellington High School are welcome to join the rōpū, no matter your gender, ethnicity, or age.

It is an area where you can explore and partake in a Te Ao Māori group. The two main values for Kapa Haka is **manaakitanga** and **whanaungatanga**.

Manaakitanga where rangatahi support one another to feel confident with all things they do and whanaungatanga where rangatahi come together as a group and become a whanau within our kura.

If you are interested in joining Kapa Haka this year

**Contact:** Whaea Char, Whaea Maia

# Comic making club

**When:** Monday lunch time

Come along and make comics/graphic novels. You can work with other people on a big project, or created something for yourself.

**Contact:** Email Auguste Hemery - to show your interest.

[hemerau@whs.school.nz](mailto:hemerau@whs.school.nz)

Google classroom code: pending



# Competitive Video Games

**When:** Wednesday lunchtimes

We meet once a week to play all sorts of competitive video games of all varieties (Super Smash Bros, Tekken etc). We also host tournaments multiple times a year for those who are competitive.

**Contact:** John Barrow (BWJ)  
[bwj@whs.school.nz](mailto:bwj@whs.school.nz)

Arlo Hughes  
HugheAr[@whs.school.nz](mailto:HugheAr@whs.school.nz)

Google classroom code: dmpdpdh



# Dungeon and Dragons

**When:** Tuesday and Thursday Lunchtime

This club is for those who want to play or are interested in D&D.

**Contact:** John Barrow (BWJ)  
[bwj@whs.school.nz](mailto:bwj@whs.school.nz)

Ollie Thurlow-Rae  
[thurlol@whs.school.nz](mailto:thurlol@whs.school.nz)

Arlo Hughes  
[hughear@whs.school.nz](mailto:hughear@whs.school.nz)

Google classroom code: 66oymk3



# Magic the Gathering

Card game, fun

Have 4 decks in the library  
you can book out and player  
mats

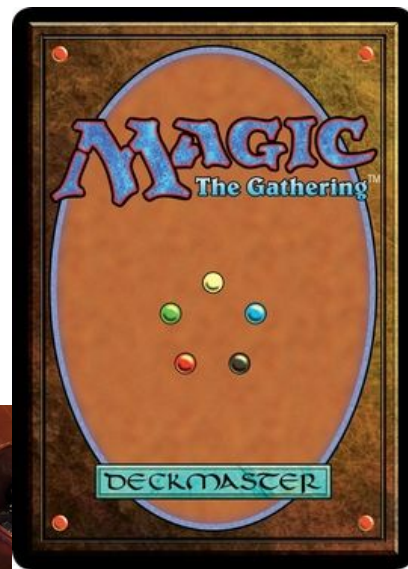
**Where:** the library

Contact:

[verscti@whs.school.nz](mailto:verscti@whs.school.nz)

Google classroom code:

r3nhx76







# FLY ON THE WALL Radio Club

## **Be the Buzz—Join Fly on the Wall Radio!**

Wellington High School's student radio is back with a fresh new identity—**Fly on the Wall!** We're building a space where student voices take flight, from music and interviews to wild debates and on-air experiments. Whether you want to DJ, produce, or just share your hot takes, this is your chance to shape a station that's

100% WHS, 100% student-driven.

## **No Experience? No Worries!**

This is your playground for sound. Learn the ropes of audio tech, broadcasting, and content creation while being part of a crew that brings WHS together—on air and online. Got something to say?

Fly on the Wall is your radio.

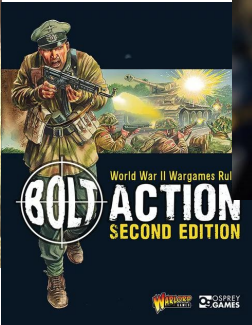
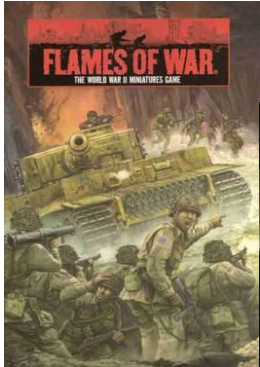
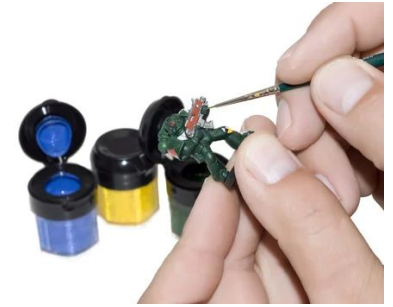
Sign up today and help us make some noise!

# Miniature Model Club

**When:** Friday lunchtime

Games Workshop 40K /Age of Sigmar games +more, along with model making, painting and activities related to tabletop gaming. Google classroom code: xymzst

**Contact:** John Barrow (BWJ)  
[bwj@whs.school.nz](mailto:bwj@whs.school.nz)



# Craft Club

**When:** Friday lunchtimes

We meet once a week to work on our own craft or join together in group projects. Everyone who is looking for a supporting community and a quiet space to dedicate to art is super welcome!

**Contact:** Arianna Ceron (CRA)  
cra@whs.school.nz

# CRAFT CLUB



# Crash Pandas Club

**When:** Wednesday lunchtimes

CRASH PANDAS is a roleplaying game in which you play a load of raccoons in a car trying to make it big in New Dork City. Kind of like dungeons and dragons, but with raccoons - and no dungeons. Or dragons.

Easy to learn, and fun to play!

**Contact:** Mike Kingston (KNM)

[knm@whs.school.nz](mailto:knm@whs.school.nz)

Daniel Holmes

[holmeda@whs.school.nz](mailto:holmeda@whs.school.nz)



# Debating

The school has both junior and senior debating teams. Trials for teams are upcoming, so keep an eye out on the Google classroom - code or4nyi5

When: After school

**Coordinator:** Stina Starke-Arts  
[starkst@whs.school.nz](mailto:starkst@whs.school.nz)

**Teacher:** Caitlin Reilly (RYC)  
[ryc@whs.school.nz](mailto:ryc@whs.school.nz)



# Dragon Boating

**Where:** Aotea Lagoon

**When:** Monday and Wednesday after school  
4.00 - 5.00

Seniors only. Training starts during year 11. You may go out on the harbour depending on the weather. You must be committed if you are wanting to make the Nationals next year and **you must know how to swim 50 metres.**

**Contact:** Whaea Char (JMC)  
[jmc@whs.school.nz](mailto:jmc@whs.school.nz)

Joe Sione  
[sij@whs.school.nz](mailto:sij@whs.school.nz)



# Duke of Edinburgh

**When:** TBC

Duke of Edinburgh - The Duke of Edinburgh's Hillary Award is available to all 14–24 year olds, regardless of their background. The Award has three levels, each progressively more challenging - Bronze, Silver and Gold. Participants are required to complete four sections at each level: Voluntary Service, Skills, Physical Recreation and Adventurous Journey. At Gold level, participants also complete a Residential Project.

**Contact:** Bharat Pancha (PAB)

[pab@whs.school.nz](mailto:pab@whs.school.nz)



# EPro8

**When:** Monday lunchtimes

EPro8 - Engineering and science competitions at a school in the Wellington Region (this year it is at Tawa College). The entry fee for each heat is \$140 per team (i.e. \$35 per person). The club will only start in term 2.

**For Y9-10s only.**

**Limited to 24 people/6 teams.**

**Contact:** Nadia van Biljon (VNN)  
[vnn@whs.school.nz](mailto:vnn@whs.school.nz)





# Football

**Where:** Turf

**When:** TBC

**Contact:** [sport@whs.school.nz](mailto:sport@whs.school.nz)



# Hockey

**Where:** National Hockey Stadium

**When:** Term 2 & 3

**Contact:** Sport@whs.school.nz



# Japan Kurabu

**When:** Friday lunch times - 1:30pm~  
(starting from Week 4)

Keen to spend your lunchtime learning Japanese phrases and doing activities like origami, movies, anime, art, games & the occasional cooking? Then this is the kurabu for you!

**Contact:** Dia Jalil (JLD)  
[jld@whs.school.nz](mailto:jld@whs.school.nz)



# Jazz Lab

**When:** Thursday lunch time (TBC)

Want to gain more skill playing Jazz in a band setting? Want to improve your improv skills? learn your instrument focused on making your own unique musical identity - aka soloing. In this class, we will improve our soloing/improv skills, reading skills, technical skills, teamwork/ensemble skills, all in a friendly environment hosted by passionate senior students from WHS! Come along regardless of your experience :) Performance opportunities at school events and Manawatu Jazz festival.

**Contact:** HEK Katherine Hodge  
hek@whs.school.nz



# Lunchtime Games Club

**When:** Everyday from 1.30pm!

A lunchtime games club happening every day!  
Come along to the library after you've had some lunch and play a game with others.

**Contact:** Nikki Peterson (PNN)

[pnn@whs.school.nz](mailto:pnn@whs.school.nz)

Carly Elder (ERC)

[erc@whs.school.nz](mailto:erc@whs.school.nz)



# Mountain Biking Club

**When:** TBC

We are a group who connect students who ride at WHS.

This involves:

- Online group to coordinate rides and events.
- riding as a team at the Capital Enduro Series, North Island and NZ Secondary school champs
- possibly some bike workshop and maintenance sessions during lunchtimes.

**Contact:** Andrew Gordon (GNA)  
Lizzie Varley (VYL)  
Frank Monastra-Woods  
Elliott Bell

[gna@whs.school.nz](mailto:gna@whs.school.nz)  
[vyl@whs.school.nz](mailto:vyl@whs.school.nz)  
[monafr@whs.school.nz](mailto:monafr@whs.school.nz)  
[bellel@whs.school.nz](mailto:bellel@whs.school.nz)



**WHS Mountain Biking Club**

Email:  
andrew.gordon@whs.school.nz - teacher in charge  
Elliott Bell - BELLEL@whs.school.nz - student leader

# Netball

**When:** Term 2 - After school

**Contact:** [netball@whs.school.nz](mailto:netball@whs.school.nz)



# Neurodiversity Club

**When:** Friday Lunchtimes or another day may be arranged

- A supportive and inclusive space to connect with other students who are neurodiverse and allies
- Get together and decide as a new group what you want to get from this club.
- Bean bags and quiet space to meet up
- Club to be student lead.
- Be part of Neurodiversity week: 17-21 March

**SIGN UP:** [Sign up Neurodiversity](#)

**Contact:** Lou Hannagan (HNL)  
hnl@whs.school.nz





# Yoga

**When:** Fridays 7:30am

This is a 60 minute class taught before school. Sessions include a combination of Mindfulness basics and Yin Yoga. This class will interest anyone who needs a bit of me-time and who is interested in emotion regulation, attention training, various breathing techniques, body awareness, relaxation, neuro-anatomy, mindfulness and stretching. This is not difficult yoga and you do not need to be fit or flexible to attend.

**Contact:** [Sport@Whs.school.nz](mailto:Sport@Whs.school.nz)



# Philosophy Club

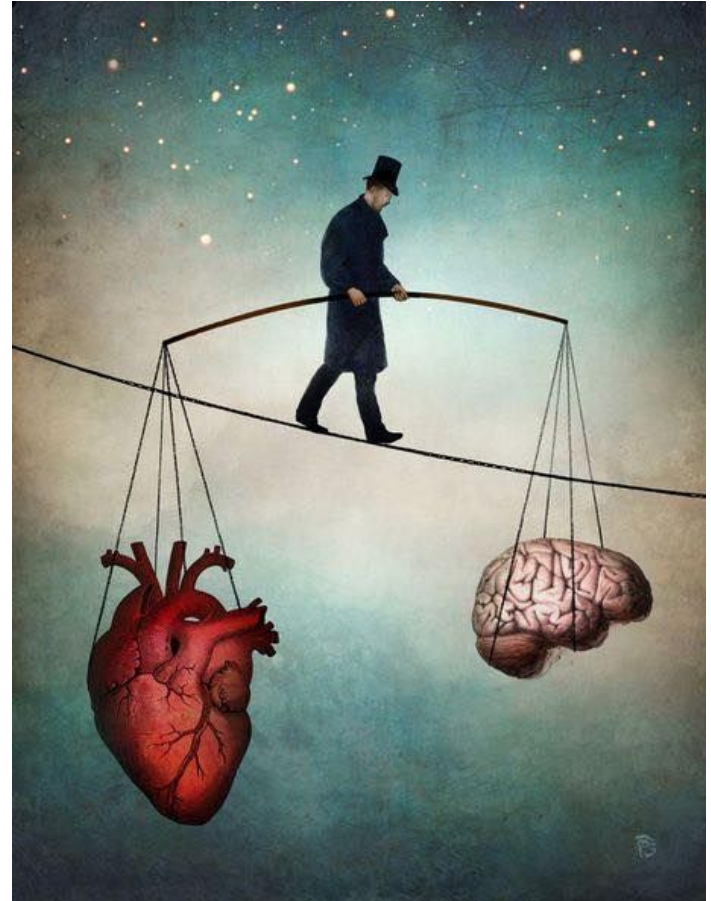
**When: Seniors**      Wednesday lunchtimes  
**Juniors**            Friday lunchtimes

Philosophy club is a chance to discuss and debate ethical dilemmas with other inquiring minds. Students have the option of entering the Australasian 'Ethics Olympiad' later in the year.

**Contact:** Michael Kingston (KNM)  
[knm@whs.school.nz](mailto:knm@whs.school.nz)

Mia Sharma  
[sharmmi@whs.school.nz](mailto:sharmmi@whs.school.nz)

Philippa Thorburn  
[thorbph@whs.school.nz](mailto:thorbph@whs.school.nz)



# Art Factory

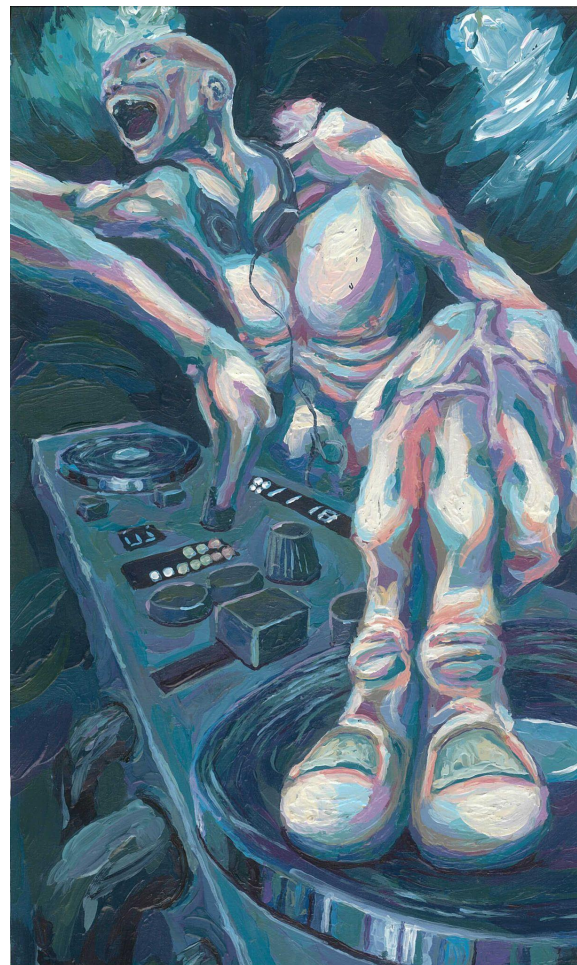
**When:** Monday & Tuesday lunchtimes

*This is a fun space for you to come and work on your own art projects or learn new techniques.*

*If you are a senior art student and would like some one on one tuition we can support you.*

*Also, we will be involved in making the props and sets for the WHS Musical so if you're keen to get involved, let me know.*

**Contact:** Rachel Clark (CKR)  
ckr@whs.school.nz



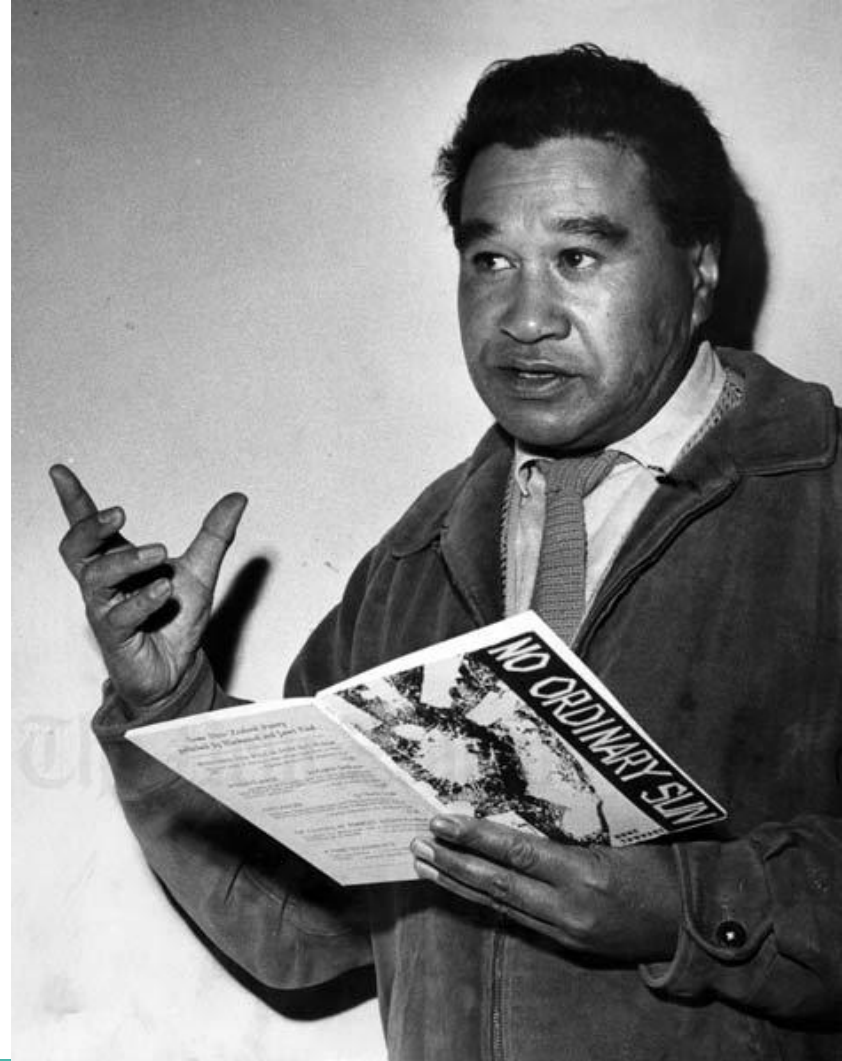
Artwork by Fedor Agafonov

# Poetry Club

**When:** Monday lunchtime

A place to write, share, discuss, and enjoy poetry.

**Contact:** Bill Scott (STW)  
stw@whs.school.nz



# Rock Climbing Club

**When:** Thursday after school

We go bouldering together at Faultline. We like to work through problems and cheer each other on!

There is a cost of \$15 at Faultline for climbing and \$3 extra for shoes (required for bouldering).

*Students must be 14 years old or older and must have a safety training from the Faultline staff on their first visit*

**Contact:** Simon Russell (RLS)  
[rls@whs.school.nz](mailto:rls@whs.school.nz)

Jordan Hallas (HAJ)  
[haj@whs.school.nz](mailto:haj@whs.school.nz)

Jonas Lamarche (LAJ)  
[laj@whs.school.nz](mailto:laj@whs.school.nz)



# Roots and Shoots

**When:** Thursday Lunchtime

We are the school sustainability, conservation and environment group. If you want to do some environmental action, be creative and have fun then you should come to roots and shoots. Everyone is welcome.

**Contact:**

Eleanor Thomas Moore  
[thomael@whs.school.nz](mailto:thomael@whs.school.nz)  
Stephen Beckett (BTS)  
[bts@whs.school.nz](mailto:bts@whs.school.nz)  
Tina Stolze (SET)  
[set@whs.school.nz](mailto:set@whs.school.nz)



# Model UN

**When:** Friday lunchtimes when needed - keep an eye on Notices.

Model UN is a Group who take part during the year in the Model UN events organised by the VUW group. This includes a Model UN and a Model Parliament. These events allow you to attend as a representative of a country in a different sessions & committee meetings over 1 or 2 days

It is also possible to attend the National Event. (last year in Christchurch)

In 2025 we hope to bring the Model UN to WHS for a school event.

**Contact:** Henry Hollis (HSH)  
[hsh@whs.school.nz](mailto:hsh@whs.school.nz)



# Theatre Sports Club

## Whose line is it anyway?

Love to think fast, tell stories, be original, make people laugh, and build confidence? The **WHS Theatresports Club** is all about **teamwork, creativity, and spontaneous fun!** Through improv games like **Space Jump**, **Party Quirks** and **Death in a Minute** you'll sharpen your skills, perform on the spot, and maybe even **challenge other schools** in friendly competitions.

Monday Lunchtimes  
Tate Gorton



Jump in, bring a friend, and let's **turn chaos into comedy** and **mayhem into magic!**



# WHS Musical 2025: Guys & Dolls



Our production of Guys & Dolls will be at the end of term 2. If you are interested in performing, playing in the band, or being part of the crew sign up here:

[Production Info Sign-up](#)

We will email you with more details in a couple of weeks.

# Sheilah Winn Shakespeare Competition

Are you keen to be part of the annual Shakespeare festival?

This is your chance to act, design, or direct a scene from a Shakespeare play and perform it as part of the Wellington Schools' Shakespeare Festival. Come to the Drama Room on Friday 21 February at lunchtime to find out more.

Tate Gorton  
Alison Hodge  
Tama Smith



# Shakespeare Society 2025

Auditions for this year's play Romeo and Juliet, were held last week. Guttled you missed out? Watch the notices at the start of next year and don't let it go by again! While you're waiting, come and see the show in week 2 of next term!

# T-Shirt PrintLab

Unleash your creativity at **T-Shirt PrintLab**, where you can design, stencil, and print your own unique t-shirts! Each month, bring your ideas to life using stencil-based printing on fabrics and secondhand tees—no experience needed, just a passion for creativity and upcycling. Experiment with colors, textures, and designs while learning hands-on printing techniques. Plus, you'll have the chance to showcase or even sell your work at a school community stall! Come along, get messy, and transform old tees into wearable art!

**When?** Monthly, First meet Monday the 24th, Lunchtime.

**Who?** Jane and Tama and anyone keen to to Kreate!

[smt@whs.school.nz](mailto:smt@whs.school.nz)



# String Ensemble

**When:** Wednesday 8.30am - 9.30am

Calling all string players to come join our school's String ensemble. You'll meet other passionate string players of all ages and experiences, play at the school music night and some concerts outside of school, learn beautiful classical pieces and learn about them, improve your skills with others, learn how to play in a group and have a good time. We are excited for all the newcomers and can't wait to play alongside you!

**Contact:** Katherine Hodge  
[hek@whs.school.nz](mailto:hek@whs.school.nz)



# Student Librarians

**When:** interval, lunchtime, before and after school

We do books... library duties, kaitiakitanga, wellbeing and friendship

Library: rostered days, *(choose a day and time that suits)*:  
interval, lunch, before school, after school

**Contact:** Helen Muxlow (MWH)

[mwh@whs.school.nz](mailto:mwh@whs.school.nz)

[library@whs.school.nz](mailto:library@whs.school.nz)



# Table Tennis

**When:** Tuesday after school (Term 2)

You will be part of a team and will have to play both singles and doubles matches. There are three grades: Beginners, experienced and A grade players. You will be provided with a paddle.

The kura is limited to three teams.

**Contact:** [sport@whs.school.nz](mailto:sport@whs.school.nz)



A background image of a stage with several spotlights shining down from above, creating a dramatic atmosphere with beams of light cutting through a dark space.

# TECH TEAM

A club for students interested in developing their skills and experience in lighting and sound and supporting the performing arts at WHS. This includes working with the Shakespeare Society, crewing for Music Evenings, designing and operating lights and sound for Drama productions, and being part of the tech crew for the WHS Musical Guys and Dolls.

## Meetings

Meetings called over Google Classroom and depending on event and show requirements

## Contact Email

Tama Smith Arts Coordinator

[smt@whs.school.nz](mailto:smt@whs.school.nz)





# Tramping Club

**Where:** various places

**When:** various dates - keep an eye on the notices

Tramping around New Zealand during the weekend. Tramps have limited numbers.

**Contact:** Bharat Pancha (PAB)

[pab@whs.school.nz](mailto:pab@whs.school.nz)

Jordan Hallas

[haj@whs.school.nz](mailto:haj@whs.school.nz)



# Ultra Violet

**When:** Thursday lunchtimes

Ultra Violet is Wellington High School LGBTQIA+ group. We meet to talk about sexuality, gender and everything in between. We play fun games, learn about everything rainbow related such as Queer history, how the healthcare system affects LGBTQIA+ individuals, how to come out, binder safety and much more! Don't know if this is the club for you? Come along anyway! You don't have to be gay to attend, but you do have to be an ally. No need to sign up, just turn up!

**Contact:** Paton Smith (SHP)  
SHP@whs.school.nz



# Underwater Hockey

**When:** Junior girls   Sundays 7:40 - 8:50 pm  
Senior girls   Sundays 7:40 - 8:50 pm  
Junior open   Sundays 6:30 - 7:40 pm  
Senior open   Sundays 7:40 - 8:50 pm  
Fitness Mondays 4.30 - 5.30 pm

**Contacts:** Murray Chisholm (CMM - teacher in charge)  
[cmm@whs.school.nz](mailto:cmm@whs.school.nz)

## Underwater Hockey ambassadors:

Lily Scott    [scottli@whs.school.nz](mailto:scottli@whs.school.nz)  
Toby Greenbank   [greento@whs.school.nz](mailto:greento@whs.school.nz)

DM us on Instagram: [@whs\\_underwater\\_hockey](https://www.instagram.com/whs_underwater_hockey)



# Wind/Brass Ensemble

**When:** Thursday Lunchtimes (TBC)

Wind and brass ensemble is a group designed to support wind and brass players at any stage of playing to develop their ensemble skills.

This is a great stepping stone group for newer players wanting to eventually join junior jazz and big band.

Bring your instrument and enthusiasm!

**Contact:** Katherine Hodge  
[hek@whs.school.nz](mailto:hek@whs.school.nz)



# WOW Club

**When:** Thursday lunchtimes

This is a competition for students who would like to design a wearable art piece for the Showquest performance in June this year. TOI, the art and design competition supported by WOW, is performed live at the Michael Fowler Centre. Students meet up, make groups and design and then make their costumes. This is a great opportunity for students to show off their creativity and have a lot of fun!

**Contact:** Ruby Joy (JOR)

[jor@whs.school.nz](mailto:jor@whs.school.nz)



# Year 9 Rock band

**When:** Friday lunch time

Year 9 Rock Band is an awesome opportunity for vocalists, guitarists, keys players, bassists and drummers to get involved in the wider Music department right away.

You will be organised into a band and then have a couple of amazing senior students mentor you until you are ready to play together independently. You also get the opportunity to perform at a WHS Music Evening!

Look out for information coming very soon in the school notices!!.

**Contact:** Katherine Hodge  
[hek@whs.school.nz](mailto:hek@whs.school.nz)



# Zine Club

**When:** Tuesdays Lunchtimes

Come and make zines (self published books) in the art room Tuesdays lunchtimes. Zines are a great way to publish your own art, poems, writing, musings, and anything else you want to express—without needing anyone else's permission to do so. All materials, chill vibes and music will be provided, just bring yourselves and your ideas!

**Contact:** Morgan Hogg (HGM) [hgm@whs.school.nz](mailto:hgm@whs.school.nz) or Ruby Joy (JOR) [jor@whs.school.nz](mailto:jor@whs.school.nz)



# World Scholars cup

**Where:** TBC

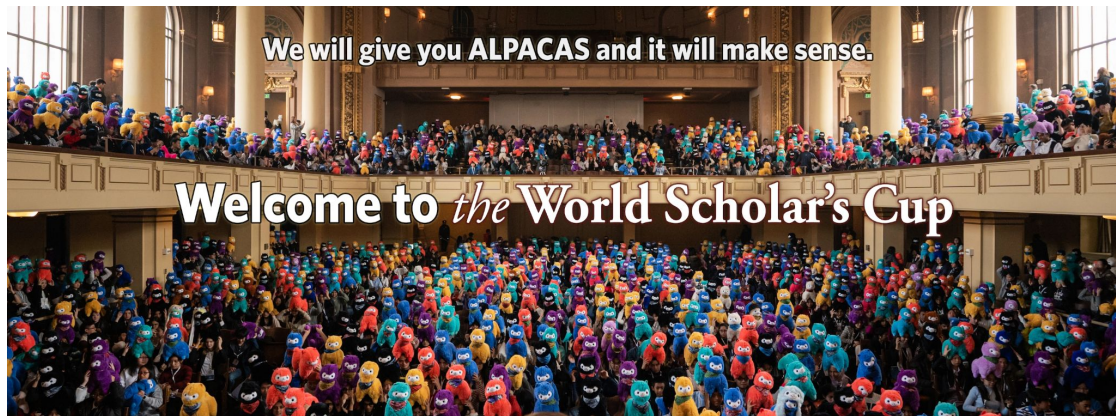
**When:** TBC

A club for debating, essay prep and explanations of the event! World Scholar's cup is a debating competition the date for the Wellington round has not yet been confirmed.

You are allowed to enter the competition even if you can not make it to club meets. Students enter this competition in teams of three.

**Contact:** Nadia van Biljon

vnn@whs.school.nz





# Tournament of Minds - New Zealand

**Where:** TBC

**When:** TBC

Tournament of Minds is a collaborative problem-solving competition for students from Years 5 to 10. Students work in teams of 7.

**Contact:** Nadia van Biljon [vnn@whs.school.nz](mailto:vnn@whs.school.nz)



# Skateboarding Club



CLUB  
**Skate**

**Come skateboarding Friday lunchtimes!**

**More info coming soon!**

**Contact:**  
[STH@whs.school.nz](mailto:STH@whs.school.nz) / [BEJ@whs.school.nz](mailto:BEJ@whs.school.nz)

:)



# El club de Español

**When:** Tuesdays at lunchtime

¡Hola! Would you like to explore the Hispanic American culture? You don't need to know Spanish to join, and you can bring your own ideas and projects about what you'd like to learn and explore. Come to have fun with us! Let's dance, cook, play games, and celebrate festivals! Google classroom code: [vyfgoj4](#)

**Contact:** Dalila Quiroz (QZD) - [qzd@whs.school.nz](mailto:qzd@whs.school.nz)

Karina Ostría Fernandez (OZK) - [ozk@whs.school.nz](mailto:ozk@whs.school.nz)

Lucas Cornejo (COL) - [col@whs.school.nz](mailto:col@whs.school.nz)

